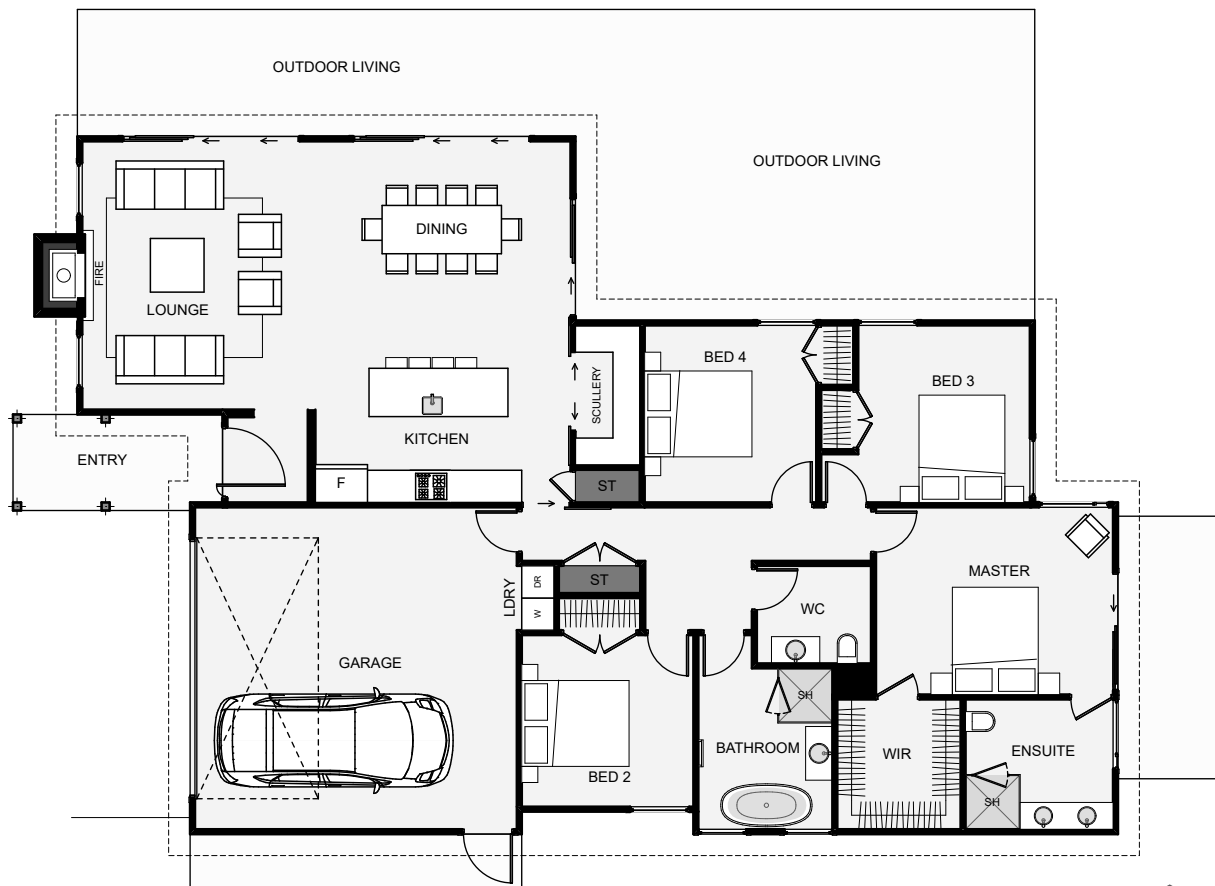




This home oozes with timeless street appeal and character, the kind of home that doesn't date. The home is also surprisingly small in size with no downsides. The home includes a good size scullery, four bedrooms, a decent master with a large walk-in wardrobe and ensuite with a dual vanity, plus some fine exterior styling that will last a lifetime!



Floor Area: 195m²

2
 4
 2
 1
 20.1m
 13.0m

Contact us:

Call Trardyn: 021 805 879
E: lunnbuilders@gmail.com
www.lunnbuilders.co.nz

