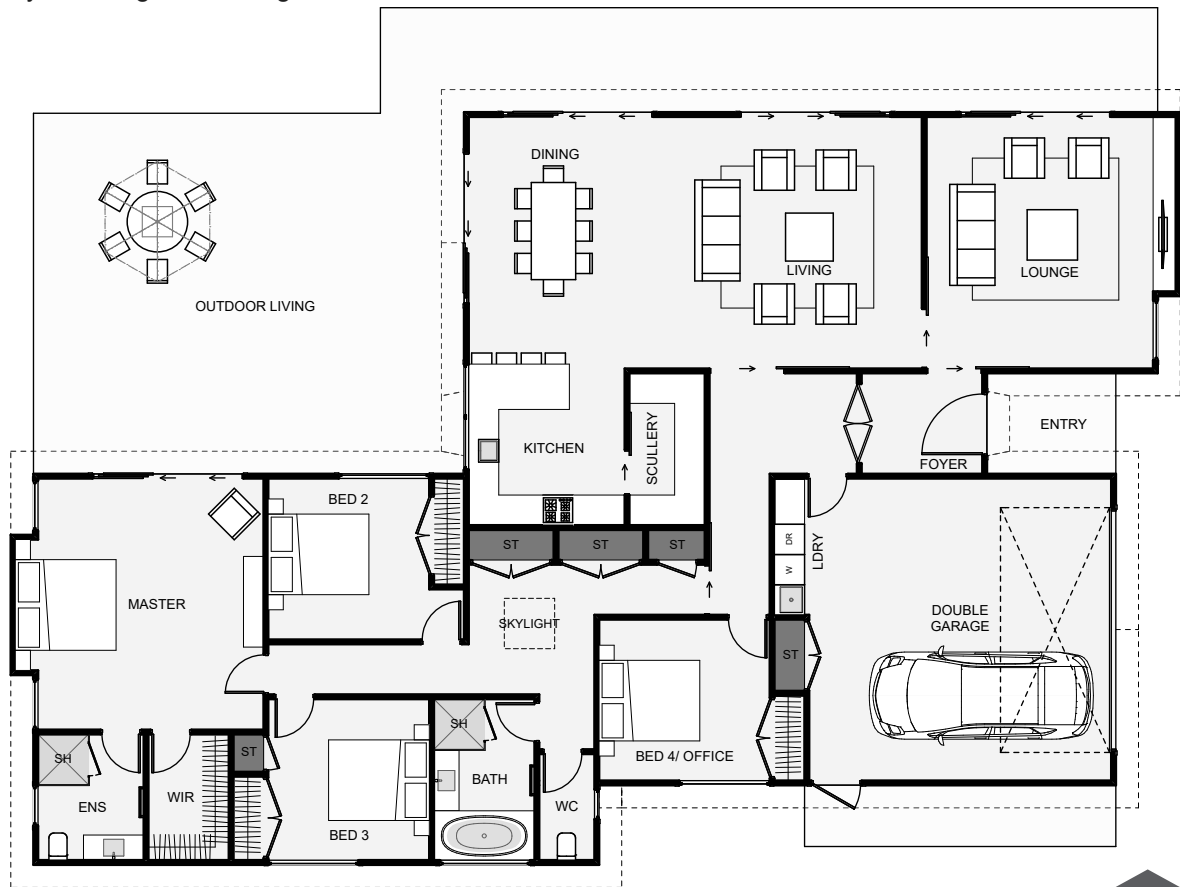




Meet the Mia, where classic meets modern. This four bedroom home works just as well inside, as it does out. Dual living with dual access points from the foyer makes this home easy to work with when having guests around. The dining area allows for a larger table, the kitchen includes a scullery and there's even room for an outdoor kitchen bar. Other pros include plenty of storage and a large master bedroom.



Floor Area: 245m<sup>2</sup>

2  
 4  
 2  
 2  
 22.3m  
 14.9m

Contact us:

**Call Trardyn:** 021 805 879  
**E:** lunnbuilders@gmail.com  
**www.lunnbuilders.co.nz**

