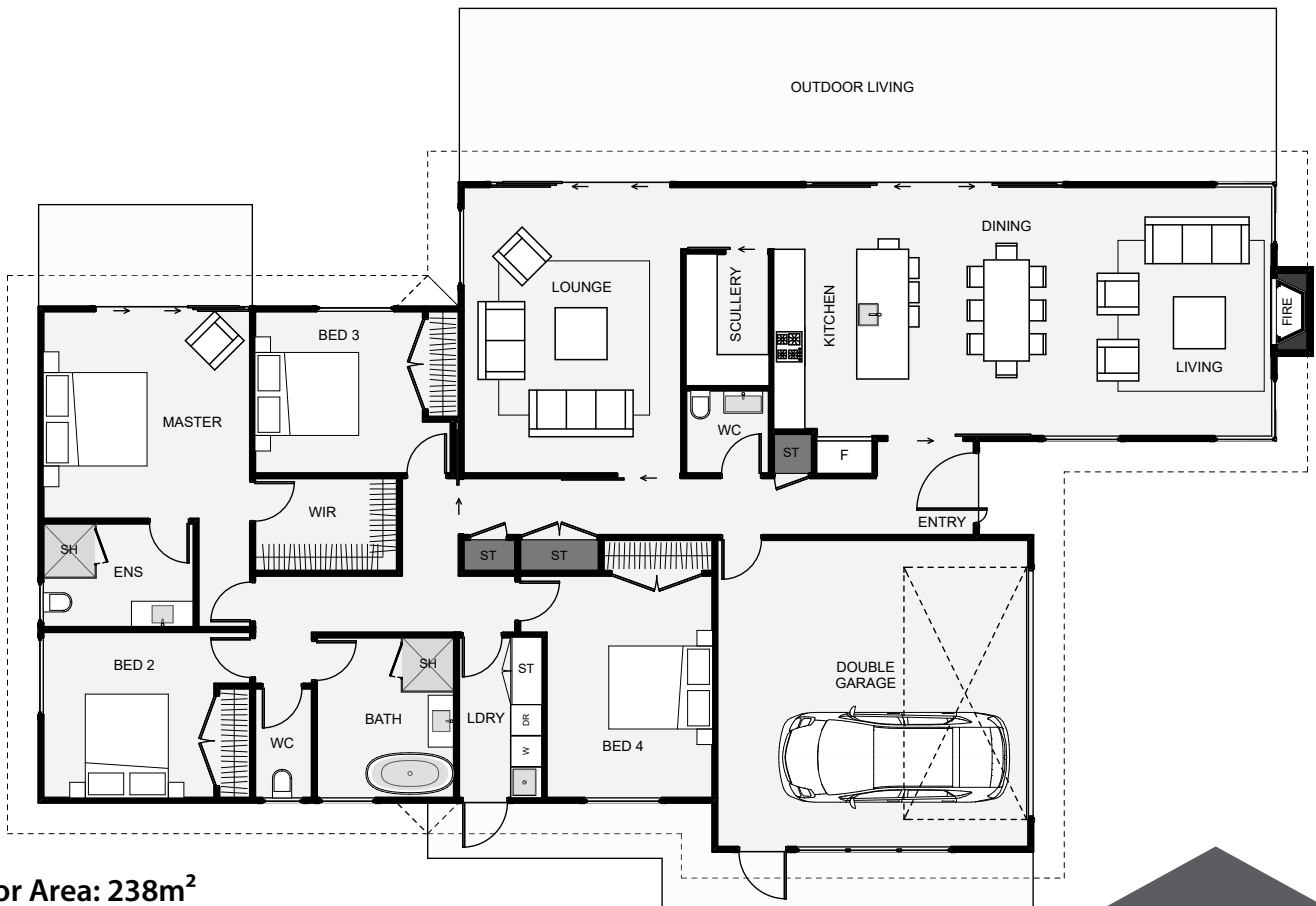




A modern designer home with a good amount of glazing and a butterfly roof. The design is based around an open plan living, dining and kitchen with a scullery separating the second lounge. Other features include good storage, a separate laundry and the option to have a high sloping ceiling in the main living, making the space feel big. This home is for those that want a standout modern family home.



Floor Area: 238m<sup>2</sup>

2  
 4  
 2  
 2  
 24.6m  
 12.9m

Contact us:

**Call Trardyn:** 021 805 879  
**E:** lunnbuilders@gmail.com  
**www.lunnbuilders.co.nz**

