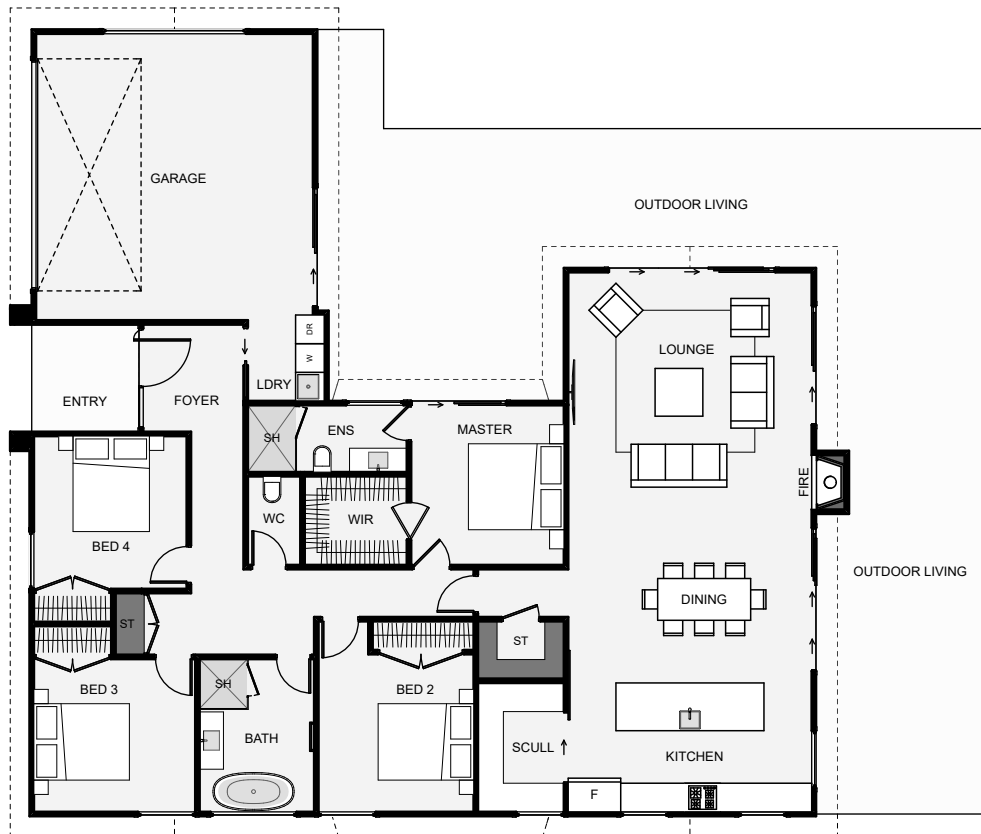




Designed to cover four bedrooms within a small footprint, this home comes with a lot of value. The garage smartly offsets the home to create a private outdoor space. The kitchen is a good size and includes a scullery. The main living wing has the option for a flat, scissor or sloped ceiling, which can make a big difference in interior feel. With this design, you can get a lot of family home within a smaller budget.



Floor Area: 201m<sup>2</sup>

2 | 
 4 | 
 2 | 
 1 | 
 17.6m | 16.5m

Contact us:

**Call Trardyn:** 021 805 879  
**E:** lunnbuilders@gmail.com  
**www.lunnbuilders.co.nz**

